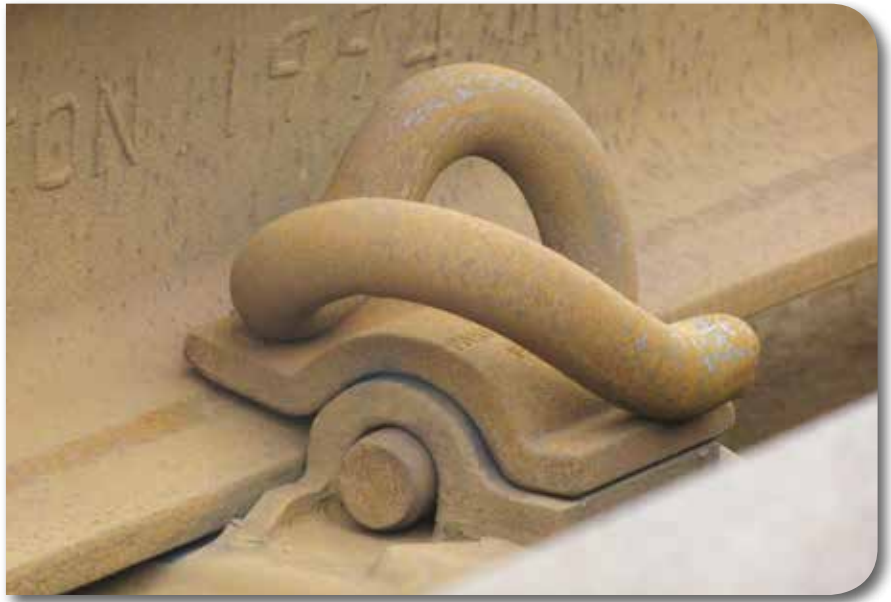


ZLR



The PANDROL® Zero Longitudinal Restraint (ZLR) system is designed to keep track forces from being transmitted to bridge and other structures. The ZLR system typically utilizes a PANDROL 'PR' 633 clip and a special intermediate cast toe plate between the top of the base of the rail and the toe of the clip. This provides a clearance that permits rails to move longitudinally with temperature changes in the structure, while holding the rail vertically in place. The ZLR system provides lateral restraint and prevents rail rollover.

 **PANDROL**

TRACK SYSTEMS

© DELACHAUX GROUP

ZLR

The ZLR system is useful on bridges and aerial structures because it minimizes the effect of rail expansion and contraction on the structure. The ZLR system aids in thermally adjusting the rail to a neutral temperature by keeping the rail in the rail seat.

Typically the ZLR system consists of a PANDROL 'PR' 633 series clip and a PANDROL cast toe plate. However, in some instances the ZLR system can use a special PANDROL 'e' clip.

For additional information go to our website and choose Products then ZLR, or choose Guidelines then ZLR.

Toe Plate Part Numbers

TOE- 13516	ZLR toe plate - tie plate 6" (4374-1)
TOE- 13517	ZLR toe plate - WOS (4374-2)
TOE- 13518	ZLR toe plate - Cast shoulder (4374-3)
TOE- 13519	ZLR toe plate - tie plate 5.5 (4374-4) and most right hand DF applications

ZLR Clips and Toe Plates are normally packed 15 per bag.



© DELACHAUX GROUP



Learn More >

Pandrol USA, LP
501 Sharptown Road
P.O. Box 367
Bridgeport, NJ 08014
(856) 467-3227
(800) 221-CLIP

www.pandrolusa.com

